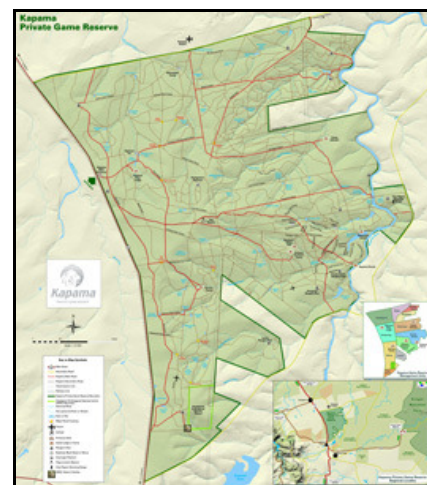


## How to get there

Kapama Private Game Reserve occupies a vast area between the northern Drakensberg mountains and the Greater Kruger National Park, in the north-east of South Africa. It spans 13 000 hectares of magnificent African bushveld, teeming with wildlife, yet is ideally situated to receive fly-in guests at nearby Eastgate Airport in Hoedspruit.

This airport is just 10 minutes' drive from the reserve entrance, and Kapama offers complimentary transfers in open game viewing vehicles directly to any of the four luxury game lodges on the reserve: River Lodge, Buffalo Camp, Kapama Karula and Southern Camp.

Situated in Limpopo province, an area renowned for its wildlife and superb safari destinations, Kapama Private Game Reserve is home to all the big game of Africa, with over 40 mammal species and 350 bird species. This equates to huge natural diversity and includes the famed dangerous Big Five of lion, leopard, elephant, buffalo and rhino. Twice-daily game drives are conducted through the rolling savannah grasslands and riverine forests that make up this magnificent African reserve.



Download the high resolution map (1.9 MB)

## Kapama Game Reserve GPS co-ordinates

Site	Lat.	Long.
River Lodge	24° 25.630 S	31° 1.610 E
Southern Camp	24° 27 17.3 S	31° 04 58.6 E
Buffalo Camp	24° 27.990 S	31° 3.070 E
Kapama Karula	24° 25.630 S	31° 1.610 E

## Eastgate Airport

The northern boundary of Kapama Private Game Reserve adjoins Eastgate Airport. This makes for easy guest transfers to Kapama's lodges in open game viewing vehicles. South African Express Airways operates daily flights from OR Tambo International Airport in Johannesburg and regular flights from Cape Town International Airport to Eastgate Airport, which is situated near Hoedspruit. Around 70 passengers can be accommodated per flight. For flight schedules and bookings, please visit [www.saexpress.co.za](http://www.saexpress.co.za).

## Self-drive instructions

### SUMMARY

Johannesburg, N12 or N4, eMalahleni (Witbank), eMakhazeni (Belfast), Emnotweni (Dullstroom), Mashishing (Lydenburg), R36 to Ohrigstad, Strydom Tunnel, Hoedspruit, R40 to Klaserie, Kapama.

### DETAILS

Take either the N12 or the N4 from Johannesburg to eMalahleni and Middelburg. Turn onto the R540 towards eMakhazeni, Emnotweni and Mashishing. Emnotweni is set on the Highveld, and is an ideal point for exploring the region. The village has a quaint atmosphere and is famous for its trout fishing, and is a good halfway or lunch stop on the way to Kapama Private Game Reserve. From Mashishing, proceed on the R36 to Ohrigstad, and through the Strydom Tunnel to Hoedspruit.

This scenic drive through Mpumalanga takes in magnificent mountain landscapes and panoramic views – as you drive up the mountain passes onto the high escarpment, you'll have sweeping vistas of the Lowveld down below. At the Strydom Tunnel, roadside stalls sell ethnic curios from the area.

From Hoedspruit, take the R40 to Klaserie and continue until you reach the Kapama Private Game Reserve entrance on the left.

GPS coordinates:

S24°25'45.08" E31°00'49.01"